

Cleaning and protection of a castle wall of pumice tuff which carried out many years past. 0805.06.
The protection repair work of Edo castle wall and the remains of a rampart



pumice tuff present condition and the root of an ivy, moss make the surface weak



The dirt of pumice tuff which carried out many years past is conspicuous.



Washing preparation



The dirt of pumice tuff which carried out many years past is conspicuous.



Before washing and the alga of a ground wall overgrow firmly.



It is the take sheet care so that it may not disperse before washing and around ground wall.

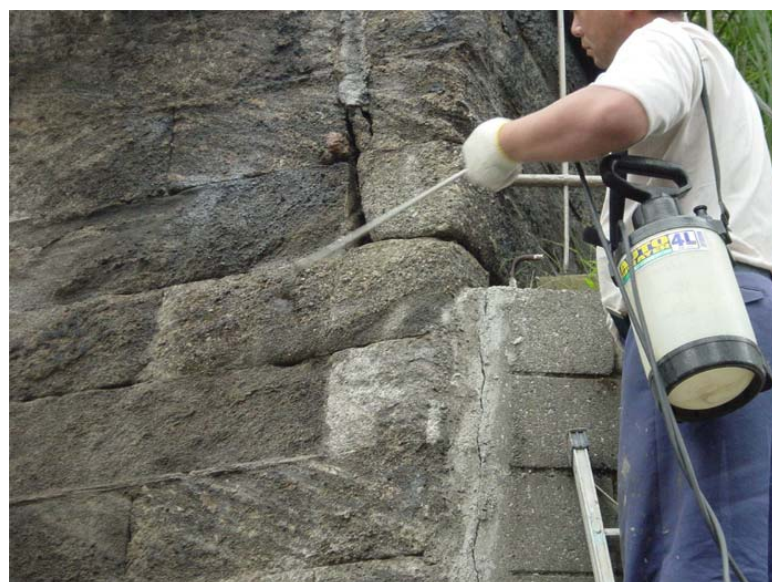
Cleaning and protection of a ground stop wall of pumice tuff which carried out many years past.0805.06



Washing although it became beautiful next morning completely it still gets wet color and is not settled



HYDROPROOF WP-MX application



HYDROPROOF HT-SP application



Completion of waterproofing protection.

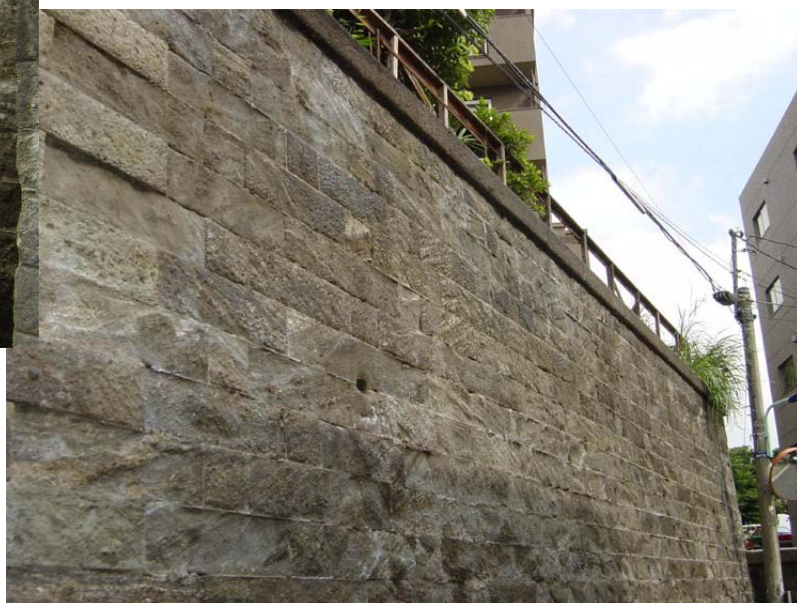


The ground wall surface after washing and a black portion get wet with rain last night and a color does not pull them.

Cleaning and protection of a ground stop wall of pumice tuff which carried out many years past.0805.06



The completion of construction



Completion of waterproofing protection.



Water is poured on a non-constructed portion by the spray. Water is sucked in as seen.



Water does not sink in.